



Compassion

adopting a caring attitude towards the difficulties of others.

Honesty
truthful
acceptance of all situations.

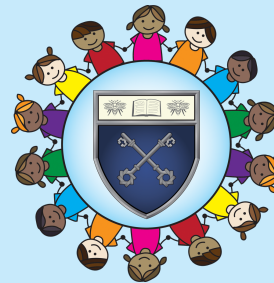
Aspirations
to achieve as much as we can in every endeavour.



Responsibility

seeking to achieve a positive effect from our individual actions.

Our School Values



Determination

the will to succeed when the task is difficult.

Teamwork

the ability to collaborate to good effect

Respect

paying due regard to the needs and feelings of others.

Enthusiasm

the keen desire to take on new challenges.

