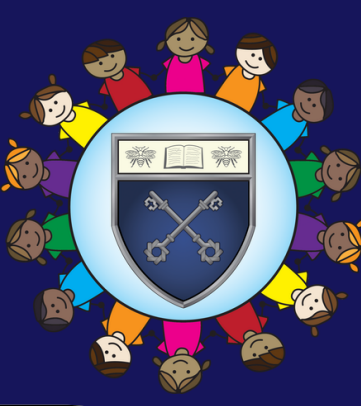


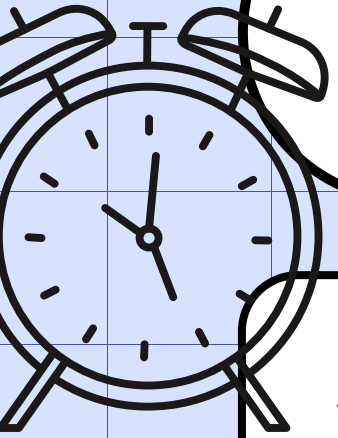
# ATTENDANCE MANAGEMENT @



FROM AUTUMN 2 2024

## 3 DAYS ABSENT/ 6 SESSIONS/LATES

You will receive a letter letting you know we have noticed their attendance



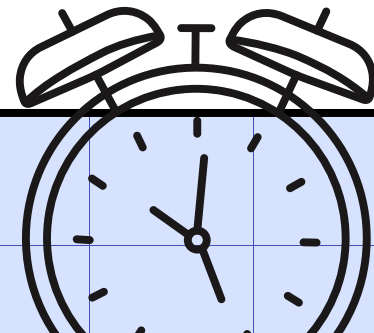
## 6 DAYS ABSENT/ 12 SESSIONS/LATES

You will be invited to a supportive meeting and your child may be placed on a Individual Attendance Plan. Illness may need proof to be marked as authorised.

## 10 DAYS ABSENT/ 20 SESSIONS/ LATES

You will be invited in for a meeting and a Parental Contract will be created. A member of Blackburn with Darwen Inclusion team may be present.

## WHAT HAPPENS NEXT?



This is a supportive measure. We are always happy to talk and support where we can

## PUPIL VOICE COMPLETED

We will meet with your child and fill out a pupil voice sheet. We may ring you and discuss their responses.

If you don't contact school with a reason for absence, we may conduct a home visit from day 1

If all the above has been exhausted a referral will be made in to Inclusion Team at BwD. Your child may be placed on an Education Support Order (ESO). This is an important document and breaking it may lead to prosecution.